



An Anchor for the Soul

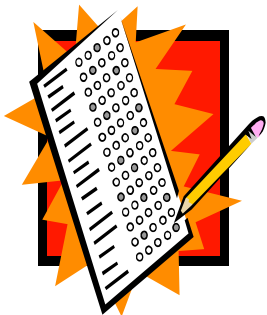
Justin Worden – January 21, 2009
Tupos SM - Wednesday Night Live

Hebrews 6:13-19 = "For when God made the promise to Abraham, since He could swear by no one greater, He swore by Himself, saying, 'I WILL SURELY BLESS YOU AND I WILL SURELY MULTIPLY YOU.' And so, having patiently waited, he obtained the promise. For men swear by one greater than themselves, and with them an oath given as confirmation is an end of every dispute. In the same way God, desiring even more to show to the heirs of the promise the unchangeableness of His purpose, interposed with an oath, so that by two unchangeable things in which it is impossible for God to lie, we who have taken refuge would have strong encouragement to take hold of the hope set before us. This hope we have as an anchor of the soul, a hope both sure and steadfast and one which enters within the veil" (NASB).

I. Abraham's Story (v.13, Gen. 22:1-14)

a. Faithful When Tested

- i. Remember last week... Gen. 22:1-14
- ii. He was patient, he was particular to God, and he personally knew this **One True God!**
- iii. Much was asked of Abraham:
 1. "AFTER THESE events, God tested and proved Abraham and said to him, Abraham! And he said, Here I am. [God] said, Take now your son, your only son Isaac, whom you love, and go to the region of Moriah; and offer him there as a burnt offering upon one of the mountains of which I will tell you." (Genesis 22:1-2, Amplified)
- iv. And Abraham gave much = was **faithful** to God!



b. In Tune When It Counted

- i. This man heard God's call (Gen. 22:1)
- ii. This servant was willing (Gen. 22:2)
- iii. He went, no questions asked
 1. Gen. 22:3 = "Abraham got up early in the morning and saddled his donkey. He took two of his young servants and his son Isaac." (Message)
 2. Isaac was his "offering" to God (sacrificial)

c. An Example To Believers

- i. Heb. 6:12 = "but to imitate those who through faith and patience inherit what has been promised" (NIV)
- ii. "Abraham is an example of faith & patience in God's promise" (Compact Bible Comm, pg. 895).

II. God's Promise (vv.13-18)

a. This Was An Ultimate Promise

- i. God made this promise on "Himself" (v.13)
- ii. Greater than man's greatest promises (v.16)
- iii. "Confirmation means 'guarantee'. An oath is used to guarantee an agreement. The Lord confirmed His oath to Abraham by swearing by Himself (v.13) because He alone is beyond deceit" (Compact Bible Comm, pg. 896).

b. Understanding This Promise to Abraham

- i. OT Reference = Genesis 22:17
- ii. "When God made his promise to Abraham, he backed it to the hilt, putting his own reputation on the line. He said, 'I promise that I'll bless you with everything I have—bless and bless and bless!' Abraham stuck it out and got everything that had been promised to him" (Hebrews 6:13-15, Msg)

c. Understanding His Promises to Us

- i. "When people make promises, they guarantee them by appeal to some authority above them so that if there is any question that they'll make good on the promise, the authority will back them up. When God wanted to guarantee his promises, he gave his word, a rock-solid guarantee—God can't break his word. And because his word cannot change, the promise is likewise unchangeable." (Hebrews 6:16-18a, Msg)
- ii. Promises on 2 absolutes = God's Word & God's oath!

d. Obtaining The Promise = Patience / Faithfulness

- i. Be patient, be faithful... and you'll be blessed!
- ii. "One of the great disadvantages of hurry is that it takes such a long time." (G.K. Chesterton)
- iii. "I waited patiently for the LORD; and He inclined to me and heard my cry" (Psalm 40:1, NASB)

III. Our Anchor (v.19)

a. An Anchor of the Soul

- i. v.19 = "This hope we have as an anchor of the soul"
- ii. This anchor = our hope in Him (steadfast hope!)
- iii. Hope = trust, anticipation, faith (like Abraham)
- iv. "The believer's hope in Christ is secure, like an anchor. Furthermore this anchor is not in sand, but in the presence of the Almighty" (Compact Bible Comm, pg. 896).

b. The Anchor's History

- i. "The earliest anchors were probably rocks and many rock anchors have been found dating from at least the Bronze Age [Before 3000 yrs?]." (Wikipedia.org)
- ii. Temporary anchor designs = fisherman, fluke, grapnel, plough, and bruce/claw
- iii. Permanent anchors = mushroom, deadweight, screw

c. The Anchor's Anatomy

- i. Parts of most anchors include = "...central bar called the *shank*, and an armature with some form of flat surface (*fluke* or *palm*) to grip the bottom and a point to assist penetration of the bottom; the position at which the armature is attached to the shank is called the *crown*, and the shank is usually fitted with a ring or shackle to attach it to the cable" (Wikipedia.org)

d. The Anchor's Characteristics

- i. Built solid & heavy
 1. "It is like a person building a house who digs deep and lays the foundation on solid rock. When the floodwaters rise and break against that house, it stands firm because it is well built." (Luke 6:48, NLT)
- ii. Dives deep (goes all the way!)
 1. "...Live deeply in Christ." (1 John 2:28, Msg)
- iii. Digs in & holds on tight
 1. "Be strong and courageous, do not be afraid or tremble at them, for the LORD your God is the one who goes with you He will not fail you or forsake you." (Deut 31:6, NASB)
- iv. Always secured/attached to the boat
 1. "It's an unbreakable spiritual lifeline... right to the very presence of God..." (Heb 6:19, Msg)

Are you anchored to the Lord? How strong is your soul's anchor?

Related music = "The Anchor Holds" (by Ray Boltz, 1994)

Color code = blue (commentary/video), red (copyrighted Bible/quotes/story)
New Hope Baptist Church - Tupos Student Ministries - Justin L. Worden
www.TuposSM.com / 863.773.2101 office / 863.781.9218 cell © 2009

Tupos Student Ministries Small Group Life Application Sheet



Date: Wednesday, January 21, 2009

Lesson Theme: Faith / Hope

Lesson Objective: To understand, from Abraham's example seen last week, what God's promises are for us and how our faith can be solid enough to receive those promises.

Lesson Text: **Hebrews 6:13-19** = "This hope we have as an anchor of the soul, a hope both sure and steadfast and one which enters within the veil" (v. 19, NASB).

Discussion Questions:

1. On a scale from 1 to 10 (10 being the best), how solid to you believe your faith in Jesus Christ is?
2. What do you anchor your soul with? (What do you spend most of your spare time doing?)
3. What characteristic of the "anchor" do you need more of?

Prayer Time: Ask God to give you a solid faith, like that of an "anchor of the soul".